

TU-210 HYDRONIC HEATING TRAINING UNIT

This training unit demonstrates the operation of a boiler (customer chooses one option between gas or electric), unit heater, baseboard and radiator, with 3 zones valves and thermostats, expansion tank, and faults allowing simulations of failed components.

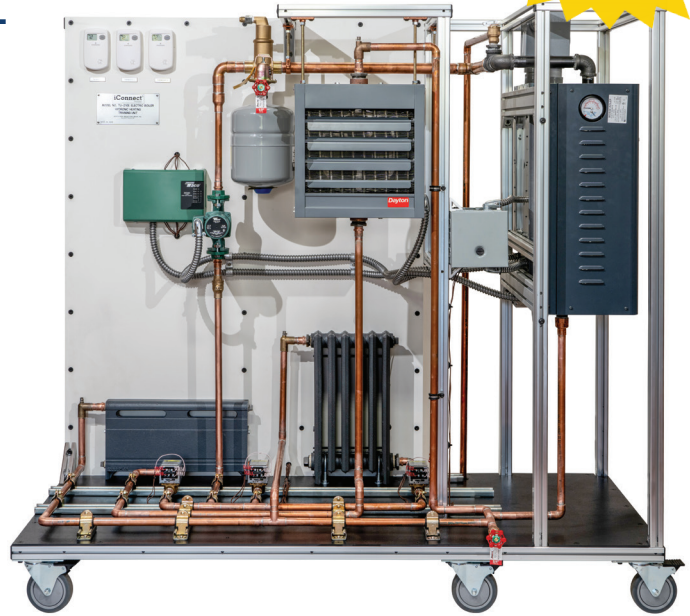
Specifications

Electrical Requirements:

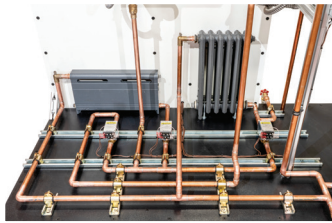
Gas version: TU-210G: 120V; 60Hz; 20A, plug included

Electric version: TU-210E: 240V; 60Hz, 100A, plug not included

Overall Size: 70" L x 33" W x 77" H



TU-210E Electric boiler option



TU-210G Gas boiler option

**CUSTOMERS HAVE THE CHOICE OF EITHER:
Gas or Electric Boiler**



TU-WPP Optional Water Pump Package comes with 25 gallon tank and convenient cart.

Shipping Weight: 320 lbs.

Shipping Dimensions: 48" L x 48" W x 64" H



See page 31 for more information on the iConnect Training Digital Equipment Kit.



Additional e-Learning curriculum available, contact us for more information.

TU -210G Shipping Weight: 920 lbs.

Shipping Dimensions: 80" L x 48" W x 78" H

TU -210E Shipping Weight: 1050 lbs.

Shipping Dimensions: 80" L x 48" W x 78" H