

**CUSTOMIZE
YOUR TRAINING
UNIT!**

EXAMPLES

TU-208 COMBINATION FORCED AIR & HYDRONIC HEATING TRAINING UNIT

This combination training unit provides demonstration and service practice with forced air and hydronic heating systems, including hot water heating systems. All components are standard brands of equipment, full size, and completely operational.

Specifications

Electrical requirements: 208/240VAC; 60Hz; 100A

Uses R-410A Refrigerant

Overall Size: 191" L x 34" W x 95" H

Training unit can be custom built to meet your needs

Features

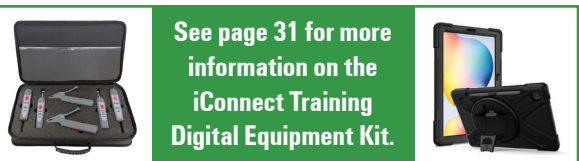
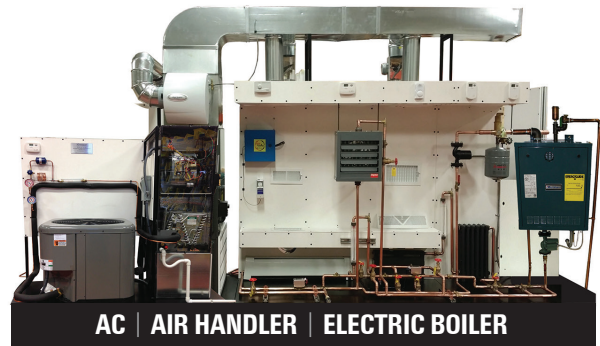
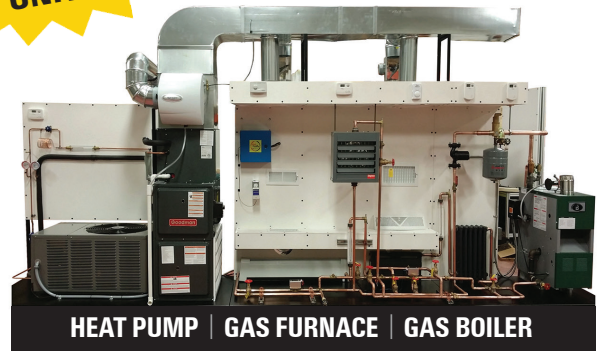
- Forced air portion with (2) thermostats, (2) zones
- Hydronic portion with (2) thermostats, (2) zones
- A student experiment manual specifically written for this equipment
- Experiments include: Introduction of Principles, References, Pre-Lab Questions, Lab Procedure, Post-Lab Exercises
- Experiment topics include: Forced Air Furnace, Circulation Systems, Burner Systems, Flue Gas Analysis, Duct System, Air Balancing, Flame Safety Devices, Temperature and Humidity Control, Heat Transfer Devices, Draft Regulators and Piping Systems
- Includes Operations Manual and various textbooks depending on customization
- Includes new digital equipment kit with (2) Temperature Pipe Clamps, (2) Humidity/Temperature Probes, (2) Pressure Probes, (1) Wireless HDMI Display Adapter for Monitor Casting, (1) Manometer, and a tablet pre-loaded with the custom iConnect Training app

NOTE: 240V plug not included

"See optional Water Pump Package TU-WPP (on page 5.)"

CUSTOMERS HAVE THESE OPTIONS:

- **Monitor** *or* **No Monitor**
- **Heat Pump** *or* **Condensing Unit**
- **Gas Furnace** *or* **Air Handler**
- **Electric Boiler** *or* **Gas Boiler**



Additional e-Learning curriculum available, contact us for more information.

MORE COMBINATIONS AVAILABLE!

4 CRATES Shipping Dimensions and Weight:

80" L x 48" W x 78" H, 800 lbs.

80" L x 48" W x 84" H, 650 lbs.

60" L x 48" W x 84" H, 840 lbs.

80" L x 48" W x 37" H, 400 lbs.

iConnect[®]
TRAINING

