

## TU-210 HYDRONIC HEATING TRAINING UNIT

*This training unit demonstrates the operation of a boiler (customer chooses one option between gas or electric), unit heater, baseboard and radiator, with 3 zones valves and thermostats, expansion tank, and faults allowing simulations of failed components.*

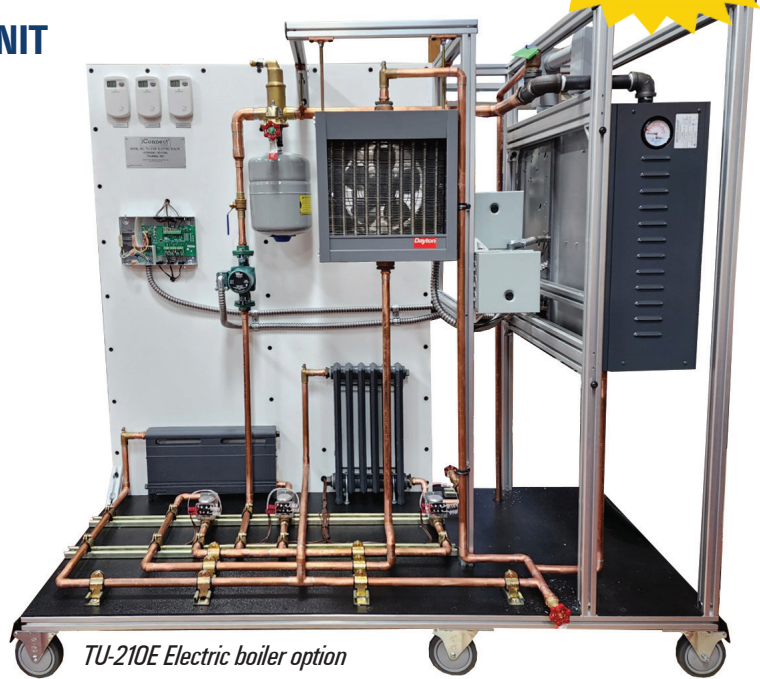
### Specifications

Electrical Requirements:

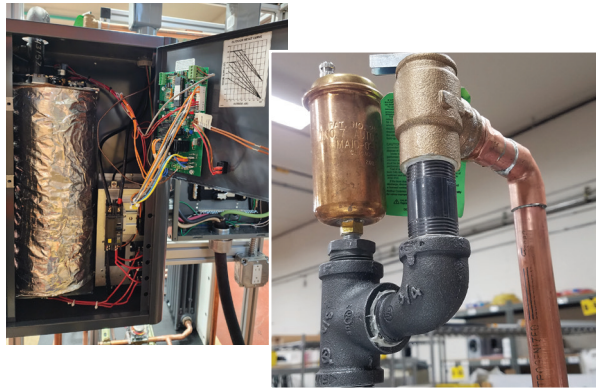
Gas version: TU-210G: 120V; 60Hz; 20A, plug included

Electric version: TU-210E: 240V; 60Hz, 100A, plug not included

Overall Size: 70" L x 33" W x 77" H



TU-210E Electric boiler option



TU-210G Gas boiler option

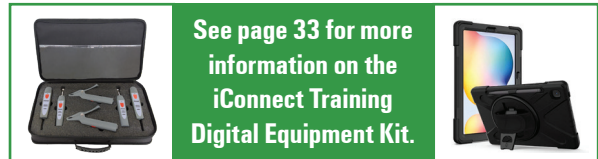
**CUSTOMERS HAVE THE CHOICE OF EITHER:  
Gas or Electric Boiler**



*TU-WPP Optional Water Pump Package comes with 25 gallon tank and convenient cart.*

**Shipping Weight: 320 lbs.**

**Shipping Dimensions: 48" L x 48" W x 64" H**



**Additional e-Learning curriculum available, contact us for more information.**

**TU -210G Shipping Weight: 920 lbs.**

**Shipping Dimensions: 80" L x 48" W x 78" H**

**TU -210E Shipping Weight: 1050 lbs.**

**Shipping Dimensions: 80" L x 48" W x 78" H**