

TU-100 BASIC REFRIGERATION TRAINING UNIT

This training unit demonstrates domestic refrigerators, freezers, self-contained air conditioning units and reverse cycle or heat pump systems. This is 4 training units in one!

Specifications

Electrical requirements: 120VAC; 60Hz; 15A

Uses R-134a Refrigerant

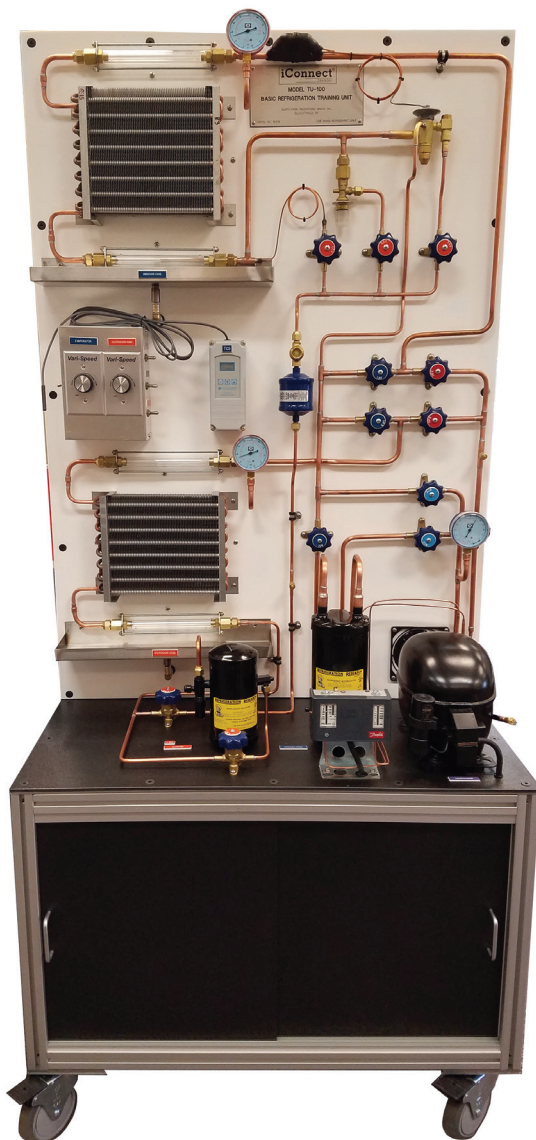
Overall Size: 34.5" L x 18" W x 77.5" H

1/3 HP hermetically sealed reciprocating compressor.

Panels are 1/4" thick plastic with steel reinforced component shelf

Features

- Extended view sight glass tubes at inlet and outlet of evaporator and condenser constructed of explosion-proof, tie-bolt design
- Drip pans with drains located under each both indoor coil and outdoor coil
- Color-coded valves, gauges, and hand valves to bypass various components and change from cooling to heating (heat pump operation)
- Conditions of refrigerant and oil can be observed under various methods of operation
- Pressure gauges located at each point in which pressure variation is likely to occur
- Refrigerant flow to evaporator metered either by capillary tube, automatic expansion valve (AXV), or thermostatic expansion valve (TXV) – "3 metering devices"
- Indoor and outdoor copper tube coils with aluminum fins and variable speed fans
- Service access points on high and low side so students can practice charging and recovery techniques
- Variable fan speed controls for indoor coil and outdoor coil load adjustment
- Includes booklet which contains a Student Lab Manual, Operation Manual, and Instructor's Manual
- Includes new digital equipment kit with (2) Temperature Pipe Clamps, (2) Humidity/Temperature Probes, (2) Pressure Probes, (1) Wireless HDMI Display Adapter for TV Casting, and a tablet pre-loaded with the custom iConnect Training app



See page 33 for more information on the iConnect Training Digital Equipment Kit.



Additional e-Learning curriculum available, contact us for more information.

Shipping Weight: 550 lbs.

Shipping Dimensions: 49" L x 45" W x 87" H

iConnect[®]
TRAINING

