

# TRAINING UNITS

## TU-208 COMBINATION FORCED AIR & HYDRONIC HEATING TRAINING UNIT

*This combination training unit provides demonstration and service practice with forced air and hydronic heating systems, including hot water heating systems. All components are standard brands of equipment, full size, and completely operational.*

### Specifications

Electrical requirements: 208/240VAC; 60Hz (Amp requirement varies with model)

Uses R-410A Refrigerant

Overall Size: 191" L x 34" W x 95" H

Training unit can be custom built to meet your needs

### Features

- A student experiment manual specifically written for this equipment
- Experiments include: Introduction of Principles, References, Pre-Lab Questions, Lab Procedure, Post-Lab Exercises
- Experiment topics include: Forced Air Furnace, Circulation Systems, Burner Systems, Flue Gas Analysis, Duct System, Air Balancing, Flame Safety Devices, Temperature and Humidity Control, Heat Transfer Devices, Oil Fired Boiler and Burner Systems, Draft Regulators and Piping Systems
- Includes Operations Manual and various textbooks depending on customization

*NOTE: 240V plug not included*

*"See optional Water Pump Package TU-WPP (on page 3.)"*

### TU-208: Suggested 12 courses totaling 195 credit hours

*Subscription includes Instructor's selection of any 5 courses in catalog. Add more courses by request.*

1. 101 Fundamentals
2. 121 Air Properties and Measurement
3. 133 Gas Heat
4. 135 HVACR Heat Pumps
5. 141 Refrigeration I
6. 142 Refrigeration II
7. 143 Refrigeration Cycle Service Procedures
8. 191 Hydronics I
9. 241 Intro to Cooling System Troubleshooting
10. 242 R-410A Refrigerant Technology
11. 243 Advanced Troubleshooting
12. 265 Small Commercial Boiler Maintenance

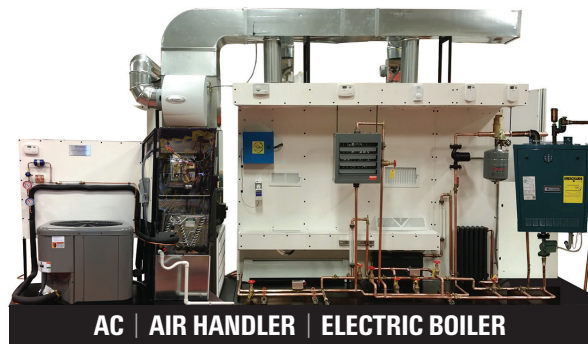
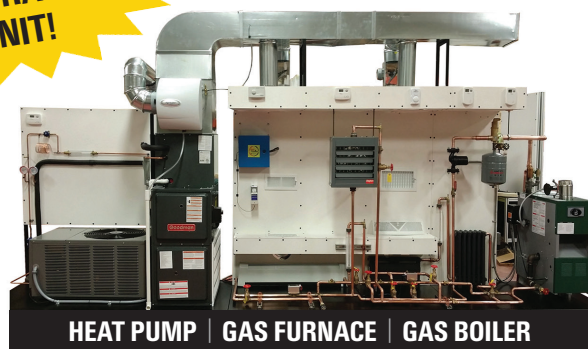
E-LEARNING CURRICULUM  
NOW AVAILABLE

**iConnect**<sup>®</sup>  
TRAINING



**CUSTOMIZE  
YOUR TRAINING  
UNIT!**

## EXAMPLES



### CUSTOMERS HAVE THESE OPTIONS:

- Heat Pump *or* Condensing Unit
- Gas Furnace *or* Air Handler
- Oil-Fired Boiler *or* Electric Boiler *or* Gas Boiler

**INCLUDES:** The popular iManifold 900C service kit, and a new iManifold Pulse kit for permanent installation and 24/7 monitoring on a package unit. See page 34 for more details.

**NOW  
INCLUDES  
THE 921M!**

### MORE COMBINATIONS AVAILABLE!

#### 4 CRATES Shipping Dimensions and Weight:

- 80" L x 48" W x 78" H, 800 lbs.
- 80" L x 48" W x 84" H, 650 lbs.
- 60" L x 48" W x 84" H, 840 lbs.
- 80" L x 48" W x 37" H, 400 lbs.