

TU-100 BASIC REFRIGERATION TRAINING UNIT

This training unit demonstrates domestic refrigerators, freezers, self-contained air conditioning units and reverse cycle or heat pump systems.

Specifications

Electrical requirements: 120VAC; 60Hz; 15A

Uses R-134a Refrigerant

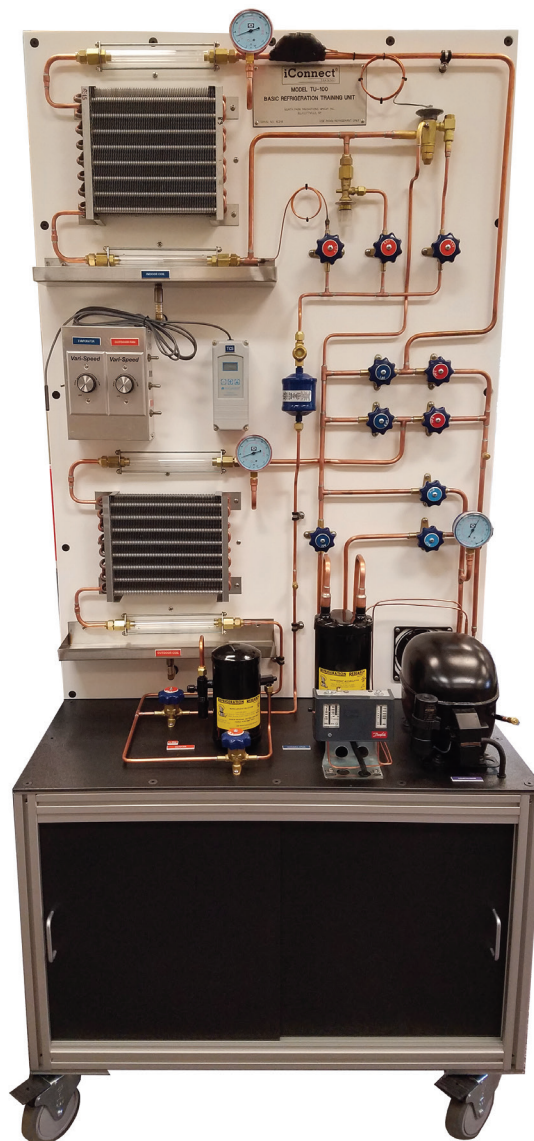
Overall Size: 34.5" L x 18" W x 77.5" H

1/3 HP hermetically sealed reciprocating compressor.

Panels are 1/4" thick HDPE with steel reinforced component shelf

Features

- Sight glass tubes at inlet and outlet of evaporator and condenser constructed of explosion-proof, tie-bolt design
- Drip pans with drains located under each both indoor coil and outdoor coil
- Uses popular, brand name components
- Color-coded valves, gauges, and hand valves to bypass various components and change from cooling to heating (heat pump operation)
- Conditions of refrigerant and oil can be observed under various methods of operation
- Pressure gauges located at each point in which pressure variation is likely to occur
- Refrigerant flow to evaporator metered either by capillary tube, automatic expansion valve (AXV), or thermostatic expansion valve (TXV)
- Indoor and outdoor copper tube coils with aluminum fins and variable speed fans
- A combination low pressure control and high pressure cutout and an electronic temperature control with a range of -30°F to 100°F
- High and low pressure cutout in the circuit at all times to prevent damage to the compressor
- Variable fan speed controls for indoor coil and outdoor coil load adjustment
- Includes booklet which contains a Lab Manual, Instructor's Guide, and Operation Guide



TU-100: Suggested 5 courses totaling 84 credit hours

E-LEARNING CURRICULUM NOW AVAILABLE

Subscription includes Instructor's selection of any 5 courses in catalog. Add more courses by request.

1. 101 Fundamentals
2. 135 HVACR Heat Pumps
3. 141 Refrigeration I
4. 142 Refrigeration II
5. 143 Refrigeration Cycle Service Procedures

INCLUDES: The popular iManifold 900C service kit, and a new iManifold Pulse kit for permanent installation and 24/7 monitoring on a package unit. See page 34 for more details.

Shipping Weight: 550 lbs.
Shipping Dimensions: 49" L x 45" W x 87" H

iConnect[®]
TRAINING

