

TRAINING UNITS

TUE-200 RESIDENTIAL WIRING DEMONSTRATOR

Students gain a full understanding of National Electrical Code residential electrical circuits. Through real-world application practice, students attain a substantial beginning level skill and proficiency using tools of the electrical trade.

Specifications

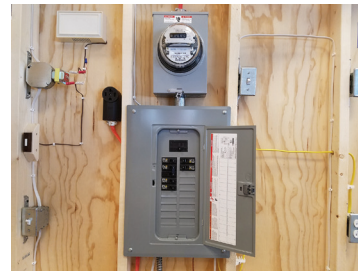
Electrical requirements: 240VAC

Overall size: Triangular Layout: 67" x 67" x 99", 90" Height

Features

- Casters, locking hardware, inter-connecting twist lock plugs and caps to connect the ceiling section. Folds to occupy minimum floor space. Sturdy construction and completely wired. Trainer will provide 100-Amp service.
- 2 & 3-way switches
- Lights controlled from 1 or more locations
- Central distribution with circuit breakers
- EMT conduit, romex and greenfield wiring
- In-wall and surface mounted wiring devices
- Low voltage signaling devices, 120 and 240VAC, 3-wire Edison wiring
- Control and installation-fluorescent lighting
- Control and installation-incandescent lighting
- Includes two books, *National Electrical Code Book* and *Electrical Wiring Residential* that offer students opportunities for hands-on practice in interpreting and applying Code requirements, making this an ideal resource for those who will work in the residential electrical industry.

* NOTE: 240V plug not included



Add an optional UEI DL429 Multimeter to this trainer so you can project electrical readings real-time in the classroom using the iManifold app.

Shipping Weight: 350 lbs.

Shipping Dimensions: 93" L x 44" W x 64" H

iConnect[®]
TRAINING